

# B. Tech. in Computer Sc. & Engineering



**ADMISSION  
OPEN  
2026**



Approved by :  
All India Council for  
Technical Education (AICTE),  
New Delhi



Affiliated to :  
Biju Patnaik University of  
Technology (BPUT),  
Odisha



**NILACHALA POLYTECHNIC  
COLLEGE OF ENGINEERING  
BHUBANESWAR**

Website : [www.nilachalpolytechnic.ac.in](http://www.nilachalpolytechnic.ac.in)  
E-mail : [btech@nilachalpolytechnic.ac.in](mailto:btech@nilachalpolytechnic.ac.in)

Mobile : 8984225627, 6370245867, 7653814121  
Whatsapp No. : 9439016555

# WELCOME TO NILACHALA POLYTECHNIC COLLEGE OF ENGINEERING (PREVIOUSLY NILACHAL POLYTECHNIC)

## DIPLOMA ENGINEERING

Located in Bhubaneswar, the Temple City of India. Nilachal is a premier Diploma Engg. Institute of Odisha, established in the year 1997. Nilachal Polytechnic has high reputation in providing Quality education and Placement support. The Institute has excellent infrastructure, Library and other facilities for the students.

Best of the Industries / Corporate IT industries like TATA Steel, Tata Power, L & T, Adani Group of Industries, Reliance, CEAT Tyres, JSW, Infosys, Capgemini, Wipro etc. are regularly recruiting students of Nilachal Polytechnic. Presently the Institute is offering Diploma Engineering courses in Civil Engineering, Comp. Sc. & Engineering, Electrical Engineering and Mechanical Engineering. The Institute is approved by AICTE, New Delhi and affiliated to SCTE & VT, Odisha.

## B. TECH. COMP. SC. & ENGINEERING

From the academic session 2024-2025, Nilachala Polytechnic College of Engineering is established under approval from AICTE, New Delhi and affiliated to BPUT, Odisha, Rourkela to impart UG level B. Tech. Course in Comp. Sc. & Engineering with intake of 120 seats.



Approved by :



All India Council for Technical Education (AICTE),  
New Delhi

Affiliated to :



Biju Patnaik University of Technology (BPUT),  
Odisha

Accredited by:



**National Board of Accreditation**  
Programme: Computer Science & Engg. | Mechanical Engg.



## VISION

Nilachala Polytechnic College of Engineering is committed to provide quality technical education & to prepare the students with knowledge, skill competency, moral & ethical values with a holistic concern for better Life, Environment & Society.

## MISSION

To impart technical education through effective teaching learning Process.

- To nurture creativity and critical thinking in applying Engineering Skills to face the fast growing Industrialization.
- To develop the holistic personality of the learners.

## ABOUT THE PROGRAMME

B-Tech in Computer Science & Engg. is a 4 years Degree Programme offered by Nilachala Polytechnic College of Engineering, approved by AICTE, New Delhi.

- The Programme is affiliated to BPUT, Rourkela and course is offered as per prescribed curriculum of BPUT, Rourkela.
- The Programme is structured to cover various aspects of Computer Science and Engineering, such as Programme Language, Algorithm, Data Structure, Computer Networks, Database Web Development, Artificial Intelligence, Cyber Security, Cloud Computing, IOT and other advanced aspects.
- The Programme includes theory classes, practical, projects and Internship Training with value added courses which will provide exposure to real world problems.
- The College will provide Placement Support to place Students in Reputed IT Companies.

# NILACHALA POLYTECHNIC COLLEGE OF ENGINEERING-ADVANTAGE



Digital Classroom



Eco Friendly Campus



Advance Computer Lab. Facilities



Hostel and Transport Facilities



Quality Faculties



Continuous Improvement in Process and System



Technology enabled Teaching and Learning

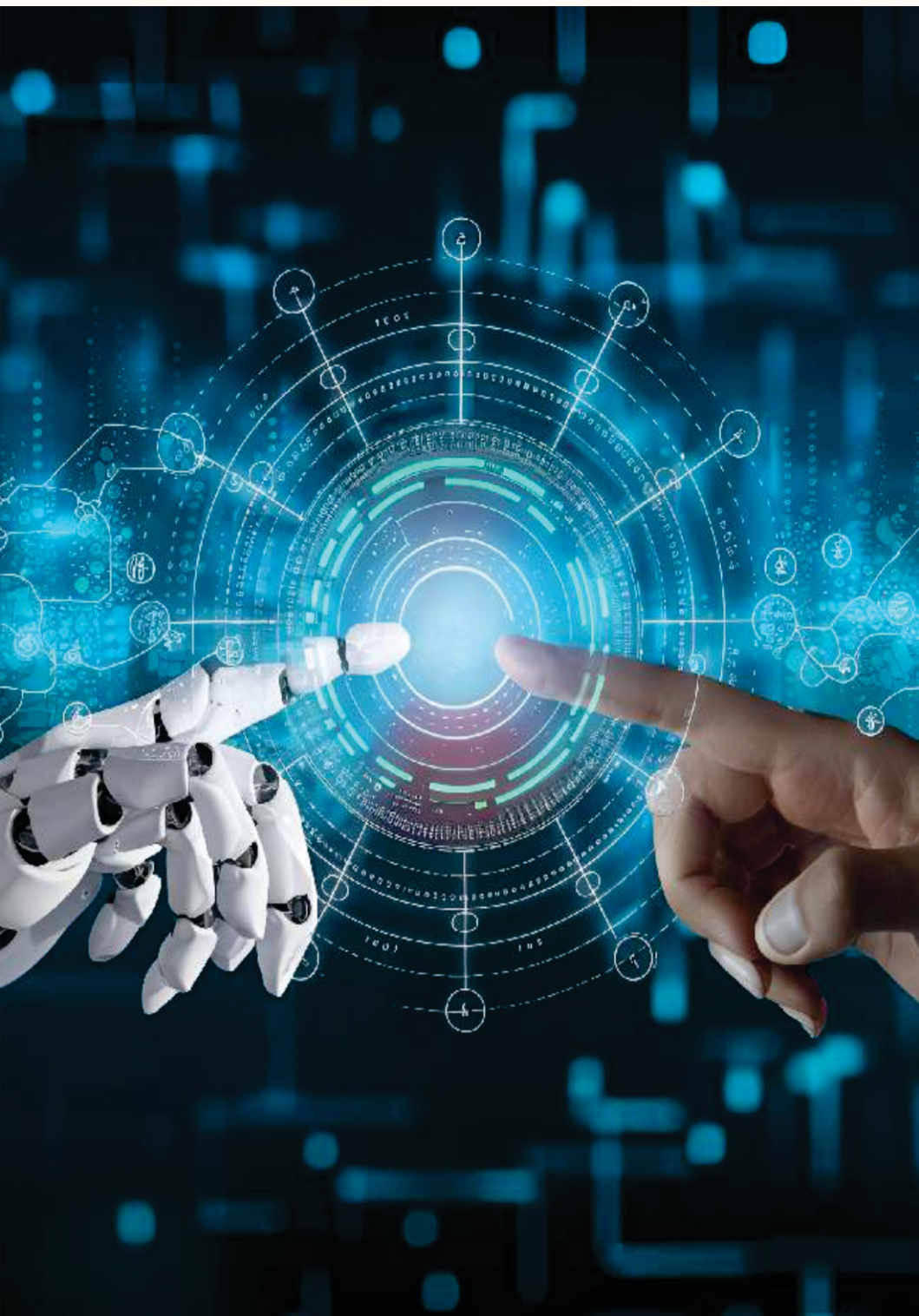


Excellent facility for Internship and Placement



28 years of outstanding record of providing quality education in the field of Engg. and Technology.





# CAREER OPPORTUNITIES FOR COMPUTER ENGINEERING



Software Developer



Artificial Intelligence  
Engineer



Cloud Application  
Developer



Cloud Engineer



Machine Learning  
Engineer



Full Stack Developer



Data Analysis



Artificial Intelligence  
Analyst



Predictive Analyst



## IMPORTANT COURSES TO BE COVERED IN B. TECH PROGRAMME



Software foundation and programming (with C++)



Data Visualisation



Programming with Python



Predictive analytics



Cloud Fundamentals



Data Science



Programming Java



Artificial Intelligence



RDBMS



## LABS AVAILABLE



Workshop



Electrical Machine Lab.



Fluid mechanics and machinery lab



Power System Lab.



Material testing lab.



Electrical CKT and Network Lab.



Automobile Engg. Lab.



Analog and Digital Electronics Lab.



Refrigeration and Air conditioning Lab.



Micro Processor and Micro Controller Lab.



Surveying Lab.



Introduction to IT Lab.



Applied Physics Lab.



Computer Application Lab.



Applied Chemistry Lab.



AutoCAD Lab.



# OUR MAJOR RECRUITERS (DIPLOMA WING)

# ADMISSION PROCESS

## 1<sup>st</sup> Sem.

### Eligibility Criteria for Admission

Candidate must have successfully passed +2 Science or 10+2 Board Examination Physics, Mathematics as compulsory subjects along with one of the Chemistry / Biotechnology / Biology / Technical / Vocational Subject / Computer Science / Information Technology / Informatics Practices / Agriculture / Engineering Graphics / Business Studies.

- Must have secured aggregate 45% marks (40% in case of SC & ST candidates) in the above subjects taken together.
- Must have qualified with a rank in the Joint Entrance Examinations conducted by National Testing Agency (NTA) or Odisha Joint Entrance Examinations conducted by OJEE Board.

## 3<sup>rd</sup> Sem. (Lateral Entry)

### Eligibility

- Diploma pass students of any branch having valid OJEE-2025 rank are eligible to take admission into 3<sup>rd</sup> Semester under Lateral Entry scheme.

### Offline Mode

- Visit Campus
- Collect Admission form & Brochure
- Detailed Address
- Phone Number Details
- Submit the duly fill up form with testimonial

### Online Mode

- Visit the website [www.nilachalpolytechnic.ac.in](http://www.nilachalpolytechnic.ac.in)
- Fill up the form online
- Download the admission brochure and go through virtual tour.

## Contact Details

Mobile : 8984225627, 6370245867, 7653814121

Whatsapp No. : 9439016555

Website : [www.nilachalpolytechnic.ac.in](http://www.nilachalpolytechnic.ac.in)

E-mail : [btech@nilachalpolytechnic.ac.in](mailto:btech@nilachalpolytechnic.ac.in)



**NILACHALA POLYTECHNIC  
COLLEGE OF ENGINEERING**  
BHUBANESWAR

Pathargadia, Near KISS Jagannath Temple, Bhubaneswar, Odisha